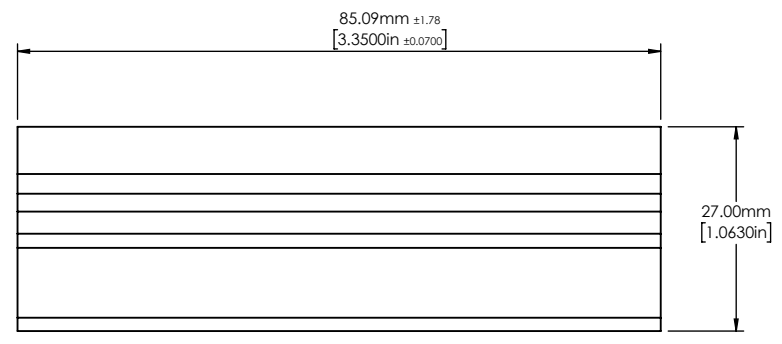
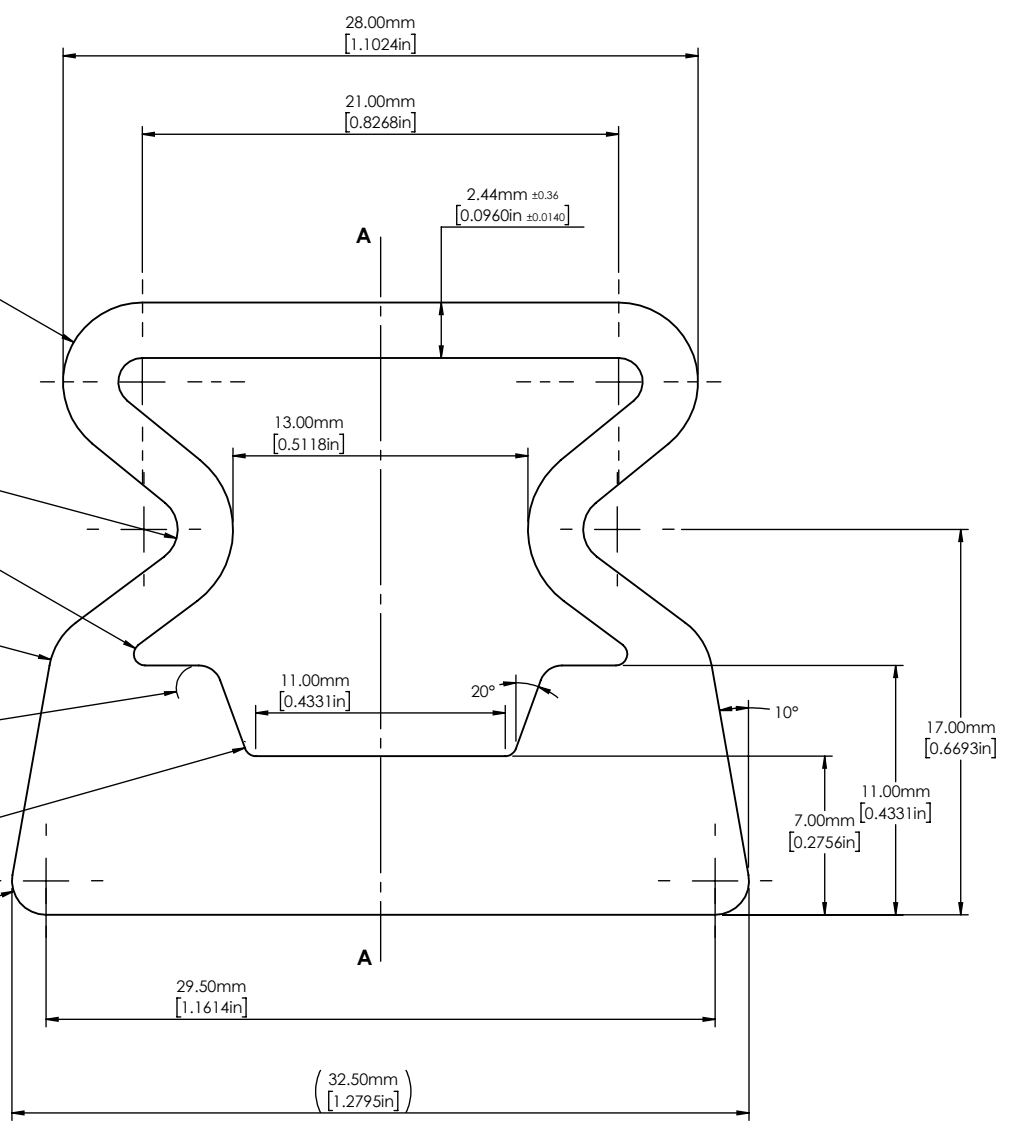


REV	DESCRIPTION	BY	DATE



Houston Products, Inc.
 115 Lake Pine Road
 Mooresville, NC 28117
 (704) 564.0521
 info@houstonproductsinc.com
 www.houstonproductsinc.com

PROPRIETARY AND CONFIDENTIAL
 The information contained in this drawing is the sole property of HOUSTON PRODUCTS, INC. Any reproduction, in part or as a whole, without the written permission of HOUSTON PRODUCTS, INC. is prohibited.

Unless otherwise specified:
 Dimensions are in **MILLIMETERS**
Rubber Extrusion Tolerances
 Standard Tolerances Per Designation:
RMA E3 - "Commercial"
 Fractions ----- ± 1/64"
 Angles ----- ± 0.5°

MATERIAL & FINISH REMARKS
Black or Ivory EPDM 50 Duro, Shore A

COMMENTS:
Symmetry maintained across centerline A-A

DRAWN BY: KS
11.15.22
ENGINEERING APPROVAL:

Title: Soft-Touch Gripper		
Size A	Drawing Number	Rev.
Scale: NTS	Weight:	Sheet 1 of 1